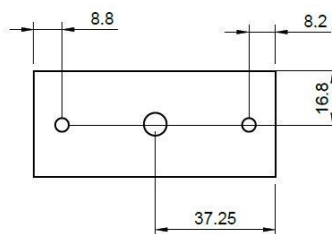
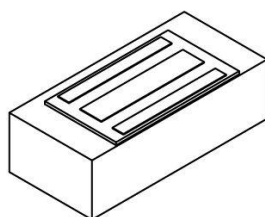
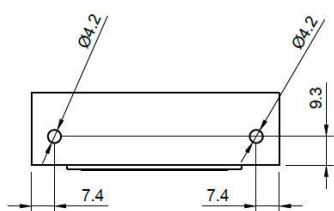
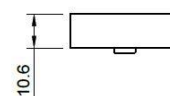
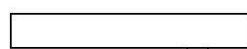
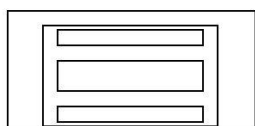
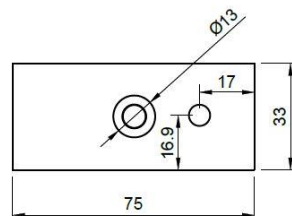
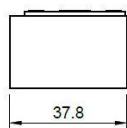
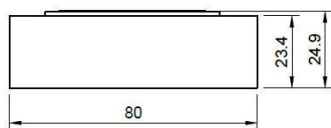
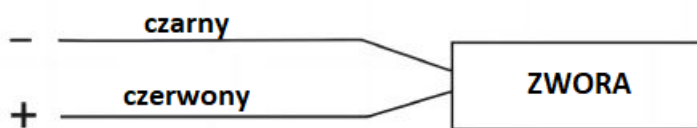
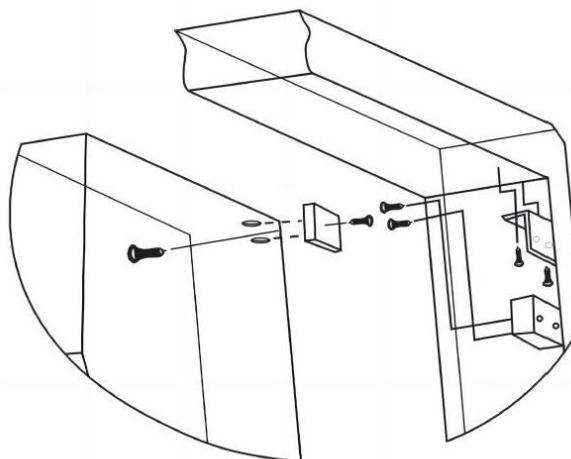
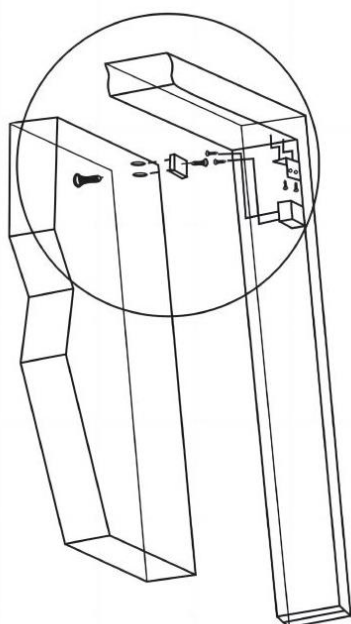


INSTRUKCJA MONTAŻU ZWORY MG60S

Model	MG60S
Zasilanie	12V DC
Pobór prądu	120mA
Siła trzymania	60kg
Wymiary zwory	80x37,8x23,4 mm
Wymiary płytki	75x33x10,6 mm



SCHEMAT INSTALACJI



hartte
by BIRA

BIRA Spółka z ograniczoną odpowiedzialnością sp. k.

ul. Falencka 1B, 05-090 Janki

NIP: 5342544757

bira@bira.pl tel.(22) 723 90 17

www.bira.pl